



Quality Improvement - Clinical Quality Team

Monthly Jam Session and Tech Spec Series

Introduction



The QI Clinical Quality Team has interpreted and broken down the Measurement Year (MY) 2023 Technical Specifications.

They then organized them in a way to make them informative, interesting and in some cases, they even made learning HEDIS and Risk **FUN!!**

This year we are excited to add two new sessions to our series!

- ▶ HEDIS 101 & Provider Resources
 - <https://healthplanofnevada.com/Provider/HEDIS-Measures>
- ▶ Risk Adjustment 101:
 - Risk Adjustment Factor (RAF)
 - Risk Adjustment Data Validation (RADV)

HEDIS® Lunch & Learn Virtual Series

2023 Monthly Jam Session and Tech Spec Series

- ▶ ~~June 14: HEDIS 101 & Provider Resources~~ (~~new offering~~)
- ▶ ~~July 12: Coding and Closing Gaps in Care~~
- ▶ **August 9: Pregnancy and Pediatric Measures**
- ▶ **September 13: Behavioral Health Measures**
- ▶ **October 11: Adult Measures**
- ▶ **November 8: Risk Adjustment 101; RAF and RADV** (*new offering*)

**For more information or to receive the link to attend, email
Cheri.Levine@uhc.com**

Introduction

Sherri Washington, BSN RN

- ▶ Sunrise Hosp Pediatrics
- ▶ Sunrise Hosp PICU
- ▶ PICU Clinical Educator
- ▶ CCSN Part time Instructor
- ▶ HPN Disease Management
- ▶ HPN HEDIS® Team

This presentation will be available on our website:

[HEDIS Measures - Doctor / Provider - Health Plan of Nevada](#)



Pregnancy

► Prenatal and Postpartum Care (PPC)

Make sure pregnant women receive quality care during pregnancy and after.

DURING PREGNANCY



AT DELIVERY



POSTPARTUM



Pediatric Measures

- ▶ Weight Assessment & Counseling for Nutrition & Physical Activity for Children/Adolescents(WCC)
- ▶ Well Child Visits in the First 30 Months of Life (W30)
- ▶ Child & Adolescent Well-Care Visits (WCV)
- ▶ Appropriate Testing for Pharyngitis (CWP)

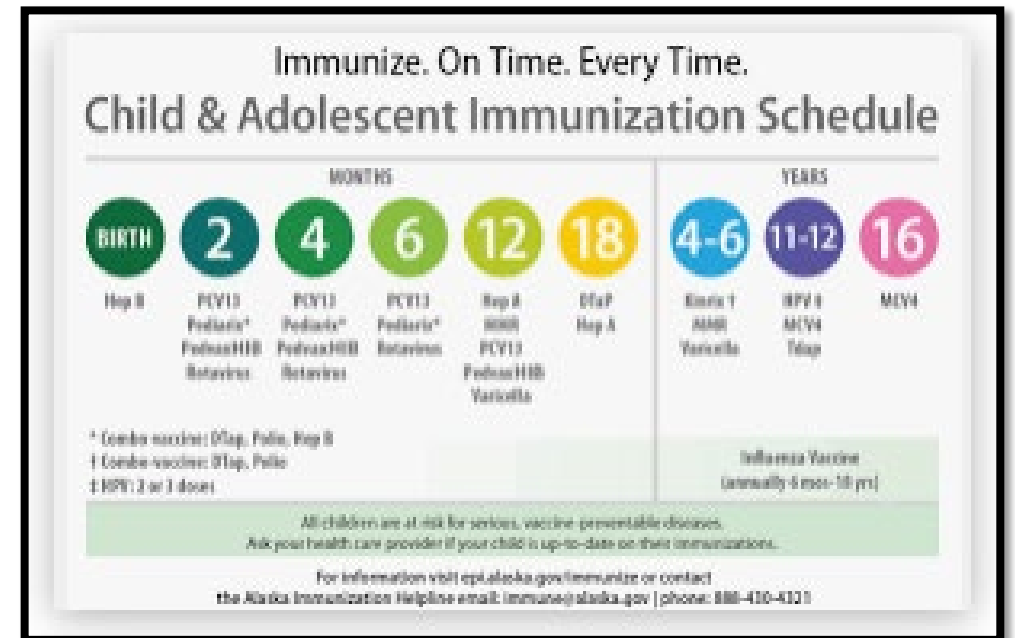


Pediatric Immunizations

▶ Childhood Immunization Status (CIS)



▶ Immunizations for Adolescents (IMA)



ECDS Measures

- Prenatal Immunization Status (PRS-E)
- Prenatal Depression Screening and Follow-Up (PND-E)
- Postpartum Depression Screening and Follow-Up (PDS-E)
- Social Need Screening and Intervention (SNS-E)



Prenatal and Postpartum Care

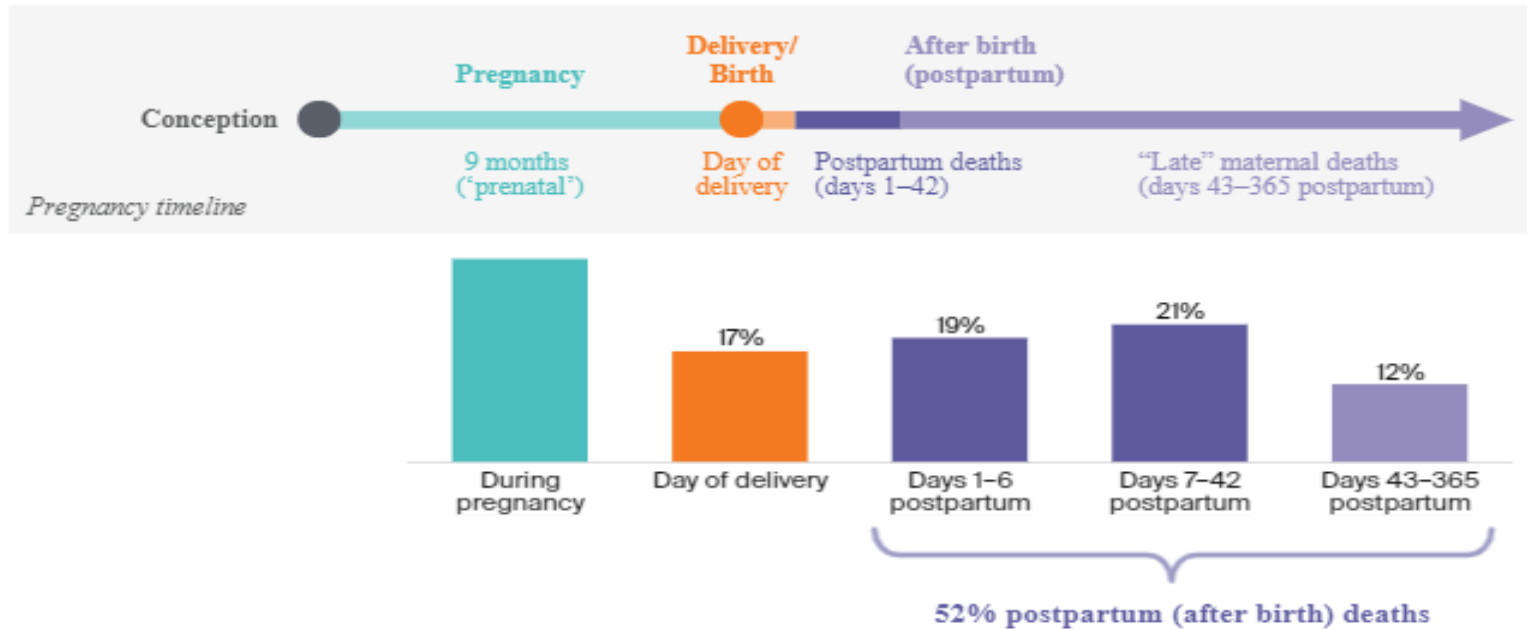
“IT MATTERS”

- ▶ In 2021, 3.7 million babies were born in the U.S.
- ▶ The United States has the highest maternal mortality rate among developed countries!
- ▶ Sixty percent of all pregnancy-related deaths are preventable.



Prenatal and Postpartum Care

“IT MATTERS”



Data: Centers for Disease Control and Prevention Pregnancy-Related Mortality Surveillance data from: Emily E. Petersen et al., "Vital Signs: Pregnancy-Related Deaths, United States, 2011–2015, and Strategies for Prevention, 13 States, 2013–2017," *Morbidity and Mortality Weekly Report* 68, no. 18 (May 10, 2019): 423–29.

Source: Roosa Tikkanen et al., *Maternal Mortality and Maternity Care in the United States Compared to 10 Other Developed Countries* (Commonwealth Fund, Nov. 2020). <https://doi.org/10.26099/411v-9255>

Prenatal and Postpartum Care

“IT MATTERS”

Sixty percent of all pregnancy-related deaths are preventable *if*:

- Women had greater access to health care
- Chronic conditions were managed more closely
- Women had recognized warning signs



PPC HEDIS Measure

Timeliness of Prenatal Care

Women that delivered who received a prenatal care visit during their 1st trimester on or before the enrollment start date or within 42 days of enrollment into their insurance.



Postpartum Care

Women that delivered who had a postpartum visit on or between 7th and 84th day post delivery.



PRENATAL AND
POSTPARTUM HEDIS
MEASURES

PPC HEDIS Measure

Timeliness of Prenatal Care

- ▶ Any documentation that refers to the woman's pregnancy.
- ▶ A basic physical OB exam.
- ▶ Prenatal procedure completed.

Visit in the 1st trimester

(99201, 99202, 99203, 99204, 99205, 99211, 99212, 99213, 99214, 99215, 99241, 99242, 99243, 99244, 99245, 99483, 99500, 0500F, 0501F, 0502F)

Postpartum Care

- ▶ Pelvic exam.
- ▶ Weight, BP, breasts, and abdomen evaluation.
- ▶ Notation of postpartum care.
- ▶ Perineal or cesarean incision/wound check.
- ▶ Screening for depression

Visit 7-84 days after delivery

(88141, 88142, 88143, 88147, 88148, 88150, 88152, 88153, 88154, 88164, 88165, 88166, 88167, 88174, 88175, 57170, 58300, 59430, 99501, 0503F, Z01.411, Z01.419, Z01.42)



PRENATAL AND
POSTPARTUM HEDIS
MEASURES

Changes/Recap

- ▶ Visits that occur prior to the enrollment start date (during the period of pregnancy) meet criteria.
- ▶ If a PCP visit, a diagnosis of pregnancy must be indicated.
- ▶ Services provided via telephone visits, e-visits, and virtual check-ins qualify for compliance for both prenatal and postpartum care.



Weight Assessment and Counseling for Nutrition and Physical Activity



WCC HEDIS Measure

WCC is a measure for children the ages of 3-17 years.

- ▶ Body Mass Index Percentile
- ▶ Nutrition
- ▶ Physical Activity



WCC HEDIS Measure

A weight, nutrition, and physical activity assessment/counseling can take place in any type of provider office.

Primary care

Pediatric care

Gynecology care



shutterstock.com · 557005286

WCC HEDIS Measure



A Discussion of Nutrition

- Assessment
- Referral to Dietician
- Referral to WIC
- Weight Counseling
- Services rendered for Eating Disorder

A Discussion of Physical Activity

- Current Sporting Activities/Physical
- Checklist of Physical Activity
- Counseling or Referral
- Educational Materials
- Weight or Obesity Counseling

<u>BMI %</u>	Z68.51 <5 th Percentile Z68.52 5 th to <85 th Percentile Z68.53 85 th to <95 th Percentile Z68.54 ≥ 95 th Percentile
<u>Counseling for nutrition</u>	Z71.3, 97802 ,97803, 97804
<u>Counseling for physical activity</u>	Z71.82, Z02.5

Changes/Recap

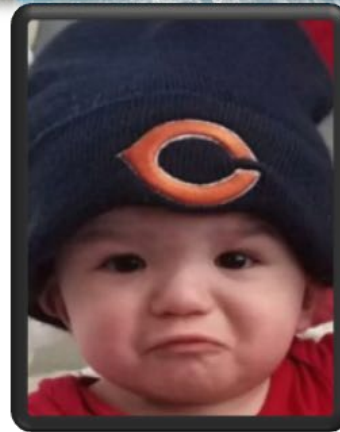


- ▶ Reminder-all forms of telehealth are acceptable for this measure.
- ▶ Coding will close each component of this measure.
- ▶ WCC services can be completed, even if the visit is not a Well Child Visit; however, treatment for an acute or chronic condition do not count for any discussion of nutrition or physical activity.
- ▶ We recommend documenting Nutrition and Physical Activity under Anticipatory Guidance whether it is a Well or Sick visit.

Non-compliant:

- ▶ Well Nourished does not count as a discussion of Nutrition.
- ▶ A discussion of appetite does not count as a discussion of Nutrition
- ▶ Don't confuse a developmental stage with Physical Activity.
- ▶ A BMI % documented without a height and a weight

Well Child Visits in the First 30 Months of Life



W30 HEDIS Measure

- ▶ Child needs 8 visits by age 30 months. At least two of those visits should be in the last 15 months (6 visits by 15 months plus 2 more after 16 months {15 months and 1 day})
- ▶ May be made compliant by synchronous audio/visual visit
- ▶ American Academy of Pediatrics recommendation
- ▶ Collected administratively only

6 or more well child visits in 1st 15 months

(99381, 99382, 99383, 99384, 99385, 99391, 99392, 99393, 99394, 99395, 99461)

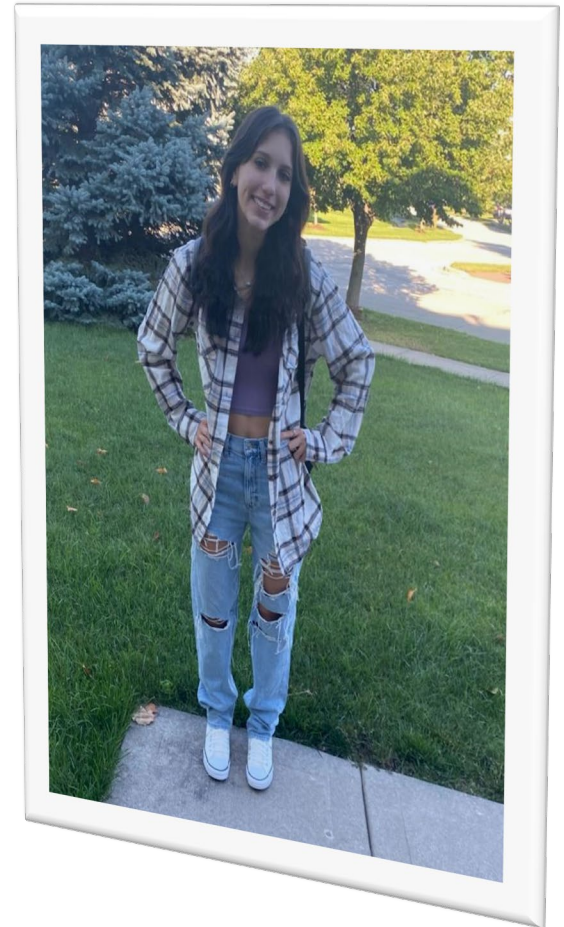
(Z00.00, Z00.01, Z00.110, Z00.111, Z00.121, Z00.129, Z00.2, Z00.3, Z01.411, Z01.419, Z02.5, Z76.1, Z76.2)

2 or more well child visits > 15 months to 30 months

(99381, 99382, 99383, 99384, 99385, 99391, 99392, 99393, 99394, 99395, 99461)

(Z00.00, Z00.01, Z00.110, Z00.111, Z00.121, Z00.129, Z00.2, Z00.3, Z01.411, Z01.419, Z02.5, Z76.1, Z76.2)

Child and Adolescent Well-Care Visits



WCV HEDIS Measure

- ▶ The percentage of members 3-21 years of age who had at least one comprehensive well care visit with a PCP or an OB/Gyne practitioner during the measurement year.
- ▶ Audio/visual telehealth is a great tool for follow up.
- ▶ Make follow up appointments on the way out.
- ▶ Great opportunity to develop trusted relationship.
- ▶ As children age out, help them to transfer care to adult provider.
- ▶ This measure is administrative only.

1 Well Care Visit

(99381, 99382, 99383, 99384, 99385, 99391, 99392, 99393, 99394, 99395, 99461)

Appropriate Testing for Pharyngitis (CWP)

- ▶ Complains of pharyngitis
- ▶ Received an antibiotic
- ▶ Strep test = Compliant

Strep test can be done 3 days before 'episode date', as well as 3 days after for a total of 7 days.

Dispensed an antibiotic and received a group A strep test as follows:
(87070, 87071, 87081, 87430, 87650, 87651, 87652, 87880)

Childhood Immunization Status

MYTH BUSTERS

Vaccine facts and fiction

Test your knowledge about vaccination

Take this quiz



CIS HEDIS Measure

- ▶ The percentage of children 2 years of age who had...by or on their second birthday.
- ▶ Give consistent messaging as a medical team in the office!!
- ▶ Have a plan to get the kid in for the second flu shot by 2.
- ▶ Code for these vaccines and enter in WebIZ.

4	<u>DTaP</u>	90697,90698, 90700, 90723
3	<u>IPV</u>	90697, 90698, 90713, 90723
1	<u>MMR</u>	90707, 90710
3	<u>HiB</u>	90644, 90647, 90648, 90697,90698, 90748
3	<u>Hep B</u>	90697, 90723, 90740, 90744, 90747, 90748
1	<u>VZV</u>	90710, 90716
4	<u>PCV</u>	90670
1	<u>Hep A</u>	90633
2 or 3	<u>Rotavirus</u>	90681 (2 Dose), 90680 (3 Dose)
2	<u>Influenza</u>	90655, 90657, 90661, 90673, 90685, 90686, 90687, 90688, 90689)

Immunizations for Adolescents



IMA HEDIS Measure

- ▶ The percentage of adolescents 13 years of age who had one dose of meningococcal vaccine, tetanus, diphtheria toxoids & acellular pertussis (Tdap) and have completed the human papillomavirus (HPV) vaccine series by their 13th birthday.
- ▶ Have a plan to get kids to return to the office to finish the HPV series.
- ▶ Be ready to answer questions about Men B.
- ▶ Women's Health clinics are starting to vaccinate for HPV!
- ▶ Code for these vaccines and enter in WebIZ.

1 between 11 and 13 yrs.	<u>Meningococcal</u> (90734, 90733, 90619)
1 between 10 and 13 yrs.	<u>Tdap</u> (90715)
2 or 3 doses between 9 and 13 yrs.	<u>HPV</u> (90649, 90650, 90651)

Southern Nevada Health District

- Holds annual Back to School vaccine clinics
- Accepts most insurances
- Reminder: since 6.30.2022, 12th graders need a **MenACWY booster**



Electronic Clinical Data Systems (ECDS)

Medical record review rate contribution is disappearing!

What does this mean?

Rates will be based purely on claims/encounter data & standardized data feeds

What can be done now to ensure your compliant information is captured?

Submit CPTII codes

Collaborate with Clinical Quality to build a data feed

For more information, please reach out to ClinicalQualityNV@uhc.com



- Prenatal Immunization Status (PRS-E)
- Prenatal Depression Screening and Follow-Up (PND-E)
- Postpartum Depression Screening and Follow-Up (PDS-E)
- Social Need Screening and Intervention (SNS-E)



References



- ▶ <https://www.aap.org/>
- ▶ AAP/Bright Futures Guidelines
- ▶ www.cdc.gov
- ▶ <https://www.commonwealthfund.org/publications/issue-briefs/2021/oct/severe-maternal-morbidity-united-states-primer>
- ▶ <https://health.gov/healthypeople/objectives-and-data/browse-objectives/vaccination>
- ▶ J Med Internet Res. 2021 Sep; 23(9): e31240.
- ▶ National Center for Health Statistics, National Vital Statistics System, Mortality and Natality. www.cdc.gov
- ▶ <https://www.ncqa.org/hedis/>
- ▶ Northwestern.edu. "Teens, Health & Technology".2015

Clinical Quality Nurse Visits

2023 Monthly Jam Session and Tech Spec Series

Recommendations

- ▶ When screenings or preventive modalities may be indicated:
 - Colonoscopy, Cologuard® and/or FOBT
 - Mammography
 - Pap Smear and/or HPV testing
 - Immunizations

Teaching/Coaching

- ▶ How to perform an appropriate blood pressure screening and when to repeat if indicated
- ▶ What elements may be necessary to complete measure compliance
 - Point of care testing and/or recommendations for lab orders
 - Obtaining height or weight for BMI calculations

Advisement

- ▶ Documentation elements that may have been captured during visits
 - History taking and recording; medical, surgical
 - Problem list updating; current vs historical
 - Diagnosis/Assessment awareness
- ▶ Coding for capturing compliance

Specialty Visits

- ▶ Primary Care / Family Medicine
- ▶ Pediatrics
- ▶ Women's Health
- ▶ Cardiology
- ▶ Endocrinology
- ▶ Nephrology
- ▶ Urgent Care Clinics



An RN subject matter expert in HEDIS can visit your office and provide support for your provider(s) and staff in real-time!



Thank you!
Questions?

If you have questions, please contact ClinicalQualityNV@uhc.com